

"Bonnie & Clyde" Jerszy Seymour

'Bonnie and Clyde' Sofa/bed is moulded in expanded polyurethane (normally used for insulation in houses) from a cast taken from a 1984 Ford Escort XR3, inside is a space which can hold a double bed or seating with a table and light all moulded from the polyurethane.

It is like a mini architecture or maxi furniture, you could even live in it. The idea was to sample a shape which was already ideal in terms of its dimensions as it is an object already made to fit the human body. but the material steel is too heavy so it was converted to expanded polurethane making it a light object.

It is also a reaction to the ubiquitous white sofa where quality of life is represented by how big a widescreen tv you've got. down with disco, here's bonnie and clyde robbing banks, being in love, popular heroes, chased and killed by the police all in a car. if they where alive in the eighties they might have even driven an XR3.

'Bonnie & Clyde' was shown for the first time as a test prototype with Sputnik exhibition at the International Exhibition of Milan furniture in 2001.

And the Museum of Design in London: 'Living in a tank (as you know)', in September-October 2002

No other show date for 'Bonnie & Clyde' has been set yet.

'Bonnie & Clyde' was shown for the first time as a test prototype during the Sputnik exhibition at the International Exhibition Furniture of Milan in 2001.

And at the Museum of Design of London: in 'Living in a tank (as you know)', from September to October 2002. No other show date for 'Bonnie & Clyde' has been set yet.

Other exhibitions:

'Sputnik', International Exhibition of Milan furniture in 2000

'Smash' (with glass pieces' Ken Kuts), International Furniture Fair of Milan, April 2001

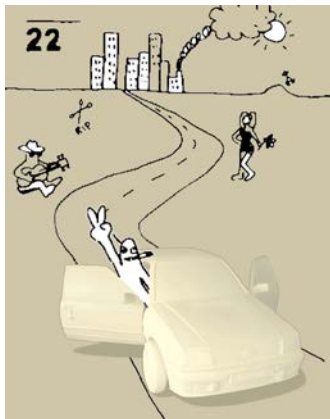
'Neotu', at the Design Museum in Paris, 2001

'The Design Now', the Design Museum in London, June-September 2001

'Enter the Monkey', solo exhibition at the Salon International Milan Furniture, April 2002

Exhibition:
from January 11th
Until February 22th 2003
.

Opening reception :
Saturday 11th January 2003
from 6 p.m. to 8:30 p.m.
Open Tuesday to Saturday
from 11a.m. to 7p.m.
.



© Courtesy Galerie kreo